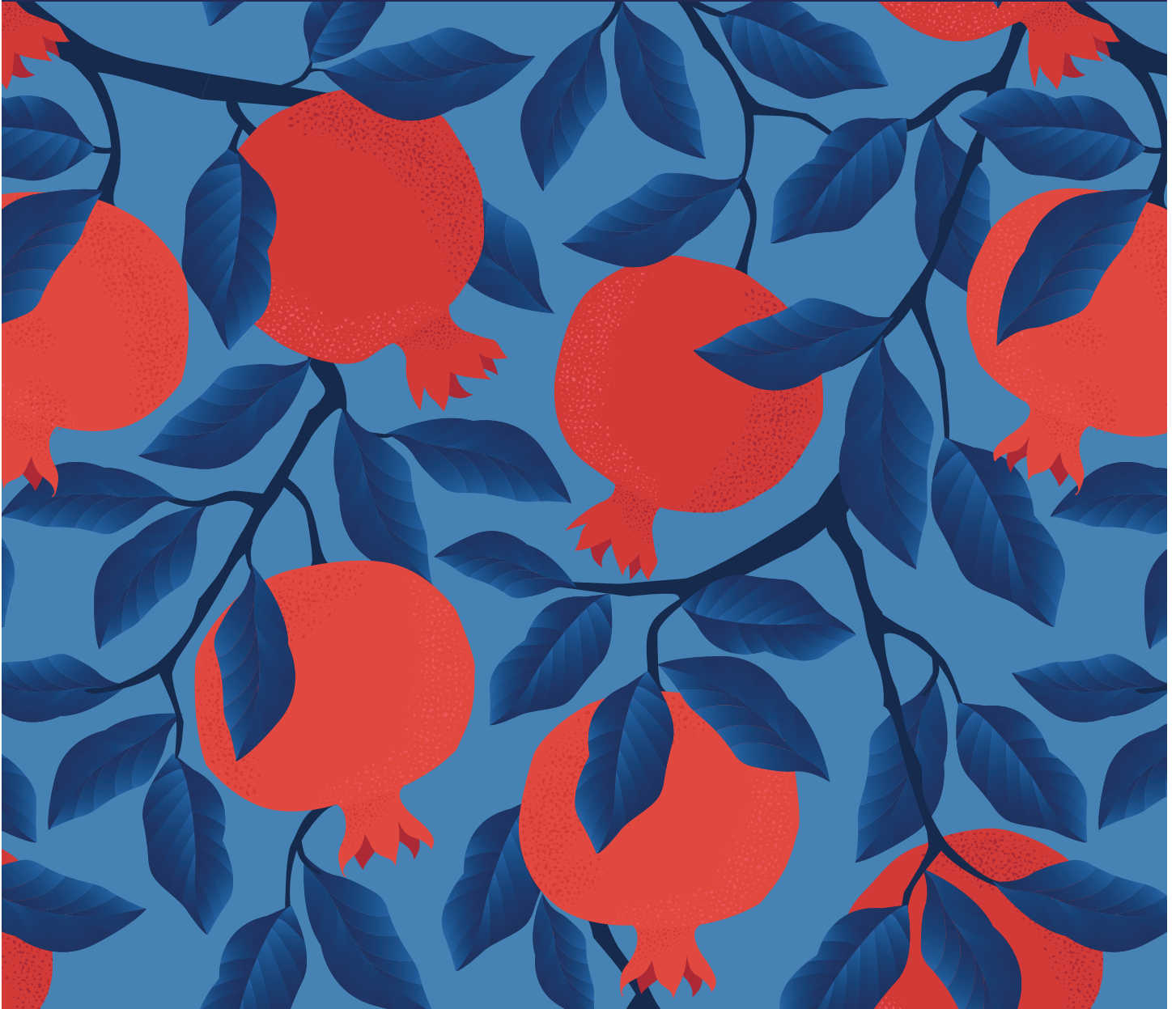


2024 | 5785

# HIGH HOLY DAY GUIDE



**TEMPLE EMANUEL**  
ANDOVER

# TABLE OF CONTENTS

Welcome Message from Clergy .....	3
Service & Program Schedule .....	4
Service & Program Descriptions .....	5
Break Fast Registration Form.....	6
Children’s Program Registration Form .....	7
Policies & General Information .....	8
Guest Ticket Order Form .....	10
Yizkor Book of Remembrance Submission Form .....	11
Sukkot and Simchat Torah.....	12
Bookplate Order Form .....	13
Yom Kippur Food Drive and Sukkot Produce Drive .....	14
Challah Order Form.....	15
College Student Care Packages Registration Form.....	15

# WELCOME

Dear Temple Emanuel Community,

We look forward to welcoming the Jewish New Year 5785 with you in a few short weeks! This year, Rosh Hashanah begins Wednesday, October 2 and continues through Friday, October 4. Yom Kippur begins at sundown with Kol Nidrei on Friday evening, October 11 and concludes at sundown with the breaking of the fast on Saturday, October 12.



As always, our services will combine the familiar with the new. We will honor our traditions, connecting us to our ancestors, while looking with hope toward our future as we turn the corner into a new year. Our worship will be conducted this year by our clergy team, Rabbi David Wilfond and Cantor Rachel Reef-Simpson, alongside a dynamic team of talented professional and volunteer musicians from our community.

This year, during our memorial service at the Temple Emanuel cemetery on Sunday, October 6, we will remember our brothers and sisters in the land of Israel as we observe the first yearzeit of the terrorist attack on our homeland and the devastating war that has ensued. Join us as we honor the memories of our loved ones both here and in our holy land and pray for a time of peace in this new year.

On behalf of our families to your families, we wish you and your loved ones happy, healthy, meaningful and restorative High Holy Days.

Shanah Tovah,  
Rabbi David Wilfond and Cantor Rachel Reef-Simpson



# SERVICE & PROGRAM SCHEDULE

Temple Emanuel members are welcome at all of our services. Some services are also open to the public so members of the larger community can celebrate the holidays with us. Please note which services require tickets and be sure to bring your ticket(s) with you. For programs that require registration, please visit [www.templemanuel.net/HHD](http://www.templemanuel.net/HHD) by September 15, 2024.

## **Saturday, September 28**

### **Selichot Dinner, Film and Service**

5:30 P.M. Dinner and "The Quarrel" Film

7:30 P.M. Discussion and Service

Open to the Public, RSVP Required for Dinner

## **Wednesday, October 2**

### **Erev Rosh Hashanah Service with Festive Oneg**

7:00–8:30 P.M.

Open to the Public

## **Thursday, October 3**

### **Rosh Hashanah Service**

10:00 A.M.–12:30 P.M.

Ticket Required

### **Rosh Hashanah Children's Program**

10:00 A.M.–12:30 P.M.

Registration Required

### **Potluck Lunch**

12:30–1:30 P.M.

Registration Required

### **Family Service for Young Children**

2:00–2:45 P.M.

Open to the Public

### **Tashlich Service**

3:30 P.M.

Pomps Pond, 147 Abbot Street, Andover

Open to the Public

## **Friday, October 4**

### **Rosh Hashanah Second Day Service**

10:00 A.M.–12:30 P.M.

Open to the Public

## **Sunday, October 6**

### **Cemetery Service and October 7th Yahrzeit Commemoration**

1:00 P.M.

Temple Emanuel Cemetery

Mount Vernon Street, Lawrence

Open to the Public

## **Friday, October 11**

### **Kol Nidrei Service**

7:00–8:30 P.M.

Ticket Required

### **Kol Nidrei Children's Program**

7:00–8:30 P.M.

Registration Required

## **Saturday, October 12**

### **Yom Kippur Morning Service (Including Yizkor)**

10:00 A.M.–1:00 P.M.

Ticket Required

### **Yom Kippur Children's Program**

10:00 A.M.–1:00 P.M.

Registration Required

### **Afternoon Services**

2:00–2:45 P.M. **Family Service**

3:30–4:15 P.M. **Healing Service**

4:30–5:25 P.M. **Mincha Service**

**with Jonah Guest Speaker**

Open to the Public

### **Neilah Closing Service**

5:30–6:25 P.M.

Ticket Required

### **Break Fast**

6:30–8:00 P.M.

Ticket and Registration Required

## **Friday, October 18**

### **Shabbat Sukkot Service and Festive Oneg in the Sukkah**

6:30 P.M.

## **Thursday, October 24**

### **Sukkot Yizkor Service**

10:30–11:30 A.M.

## **Friday, October 25**

### **Simchat Torah Celebration**

5:30 P.M. Dinner, 6:30 P.M. Service

# SERVICE & PROGRAM DETAILS

## **Selichot Dinner, Film Screening and Service**

We begin our High Holy Day season with Selichot, a traditional night of introspection and prayer that draws us into the days of awe and renewal. In partnership with the Larry Hodes Movie Series, we will be screening “The Quarrel.” This riveting film focuses on the reunion of two friends after the Holocaust as they discuss their lives, their religion and an old quarrel that came between them. According to the author of the story on which the film is based, the two friends are a literary device for the internal struggle within every Jew living in a post-Holocaust world with all of its complexities and hopes for humanity. The film and deli dinner will be followed by discussion and a brief prayer service led by our clergy. Sign up for dinner at [www.templemanuel.net/HHD](http://www.templemanuel.net/HHD) by September 15.

## **Children’s Programs**

High Holy Day programs specifically for children ages 4 through 9 (or grade 4) will be available on Rosh Hashanah, Kol Nidrei and Yom Kippur. These programs typically include musical components, holiday-appropriate story time and activities, gross motor play, as well as social and artistic activities with peers. Registration is required for children’s programs and capacity is limited. Sign up on page 7 of this brochure or at [www.templemanuel.net/HHD](http://www.templemanuel.net/HHD) by September 15.

## **Rosh Hashanah Potluck Lunch**

Spend the first afternoon of the new year with us as we gather together to enjoy a potluck lunch in the Multipurpose Room immediately following morning services. Register and sign up for your potluck contribution by September 15 at [www.templemanuel.net/HHD](http://www.templemanuel.net/HHD).

## **Services for Families with Young Children**

Join clergy and our High Holy Day songleader for a family service on Rosh Hashanah and Yom Kippur afternoons designed for children under six and their adults. These special services will include singing, movement, storytelling and learning.

## **Tashlich**

Tashlich is our annual chance to symbolically cast off our misdeeds as we seek a fresh start for our Jewish new year. This short service, which will take place at Poms Pond in Andover, gives us an opportunity to gather outdoors as we symbolically cast away our sins, worries and wrongs into the water. Bring a bit of stale bread to crumble and toss into the pond.

## **Cemetery Service and October 7 Yahrzeit Commemoration**

This year, during our annual service at the Temple Emanuel Cemetery in Lawrence, we will honor the memories of our loved ones and observe the first yahrzeit of those who perished in the October 7 terrorist attack on Israel, as well as pray for a time of peace.



# SERVICE & PROGRAM DETAILS

(Continued)

## Yom Kippur Healing Service

Yom Kippur is a time to discover the places of brokenness in our lives and find healing and hope through reflection and prayer. This creative liturgy will help restore the sense of balance and wholeness we seek.

## Yom Kippur Mincha Service with Jonah Speaker

We continue our tradition of inviting a member of our community to share a profound, transformative and personal experience. Temple member Terry Kay Bargar will give our Jonah presentation, sharing details of her need for a kidney transplant and how the selflessness and support she encountered during this journey affected her and those around her.

## Yom Kippur Break Fast

Immediately following Neilah (approximately 6:30 P.M.), meet and connect with Temple Emanuel congregants and ticketed guests for a delicious dairy break fast. Break fast includes bagels and lox, egg salad, tuna salad, hummus, fruit salad, dessert and more. Registration is required. Sign up below or at [www.templemanuel.net/HHD](http://www.templemanuel.net/HHD) by September 15.



## BREAK FAST REGISTRATION FORM

Our congregational break fast is open to Temple Emanuel members and their guests with High Holy Day tickets. Registration is required. Please sign up using this form or at [www.templemanuel.net/HHD](http://www.templemanuel.net/HHD) by September 15.

First Name \_\_\_\_\_ Last Name \_\_\_\_\_

Cell Phone \_\_\_\_\_ Email \_\_\_\_\_

Number attending age 13 and older \_\_\_\_\_ x \$18 per person = \_\_\_\_\_

Number of children (age 12 and under) \_\_\_\_\_ Complimentary \_\_\_\_\_

Total Enclosed: \_\_\_\_\_



# CHILDREN'S PROGRAM REGISTRATION FORM

Open to children ages 4 through 9 (or grade 4). **Capacity will be limited.** Please register your child(ren) by completing the form below or on our website at [www.templemanuel.net/HHD](http://www.templemanuel.net/HHD) by September 15.

Name of Temple Emanuel parent \_\_\_\_\_

Email \_\_\_\_\_ Cell phone \_\_\_\_\_

**Name(s) of child(ren) who will attend children's program:**

Name \_\_\_\_\_

Will attend:  Rosh Hashanah     Kol Nidrei     Yom Kippur

Name \_\_\_\_\_

Will attend:  Rosh Hashanah     Kol Nidrei     Yom Kippur

Name \_\_\_\_\_

Will attend:  Rosh Hashanah     Kol Nidrei     Yom Kippur

Name \_\_\_\_\_

Will attend:  Rosh Hashanah     Kol Nidrei     Yom Kippur

Name \_\_\_\_\_

Will attend:  Rosh Hashanah     Kol Nidrei     Yom Kippur

Please indicate any allergies or special notes:

\_\_\_\_\_

\_\_\_\_\_

# POLICIES & GENERAL INFORMATION

## **Tickets**

Temple Emanuel membership includes High Holy Day tickets for adult members. Tickets are not required for members' children under the age of 30. New this year: members in the Family and Next Chapter dues categories are entitled to complimentary High Holy Day tickets for your children, regardless of their age.

Tickets will be mailed to all members in good standing by September 25. To be considered in good standing and to receive tickets or purchase guest tickets, all past years' dues and fees must be paid in full and the first payment for the current fiscal year must be paid by September 15. If the timeline for payments is a concern and/or you need to request a confidential adjustment to your membership dues, please email Michelle Gamliel at [mgamliel@templemanuel.net](mailto:mgamliel@templemanuel.net). All adjustments and initial payments must be made by September 15.

## **Online Access**

Links to access services via Zoom will be emailed to Temple members in good standing five days before the service starts and again approximately 24 hours before the start of the service.

## **Tickets for Members' Guests**

Members are welcome to purchase High Holy Day tickets for out-of-town guests. To purchase guest tickets for in-person or online ticket-required services, complete the order form on page 10 or on our website at [www.templemanuel.net/HHD](http://www.templemanuel.net/HHD) by September 15. Guest tickets are \$180 per person for in-person services for guests over the age of 18 and \$180 per household for online access. College students and active military personnel are entitled to complimentary guest access.

Participation in Temple Emanuel's Benefactors Society may include complimentary High Holy Day guest tickets. To access these tickets, please complete the order form on page 10 of this booklet or on our website at [www.templemanuel.net/HHD](http://www.templemanuel.net/HHD) by September 15.

## **Reciprocal Tickets**

Temple Emanuel offers complimentary guest access to members in good standing at other congregations affiliated with the Union of Reform Judaism (URJ). If you have a guest desiring reciprocal tickets, please contact the Temple office by September 15 to request the appropriate form. Temple Emanuel members in good standing who plan to be away for the High Holy Days and would like to secure reciprocal tickets at a fellow URJ congregation should contact the temple office by September 15.



# POLICIES & GENERAL INFORMATION

(Continued)

## Seating

There is no reserved seating. In consideration of your fellow congregants, we ask that you do not save seats.

## Prayer Books for Online Participants

We recommend that online participants borrow or purchase a machzor (prayer book) to enhance your High Holy Day experience and aid in your participation during services, as the prayers will not be projected onscreen. To borrow *Mishkan HaNefesh* from the temple, please sign up at [www.templemanuel.net/HHD](http://www.templemanuel.net/HHD) by September 15. You can order your own print versions of *Mishkan HaNefesh* in standard and large print formats at [www.ccarpress.org](http://www.ccarpress.org) or an ebook version on Kindle. Note: There are separate prayer books for Rosh Hashanah and Yom Kippur.

## Parking

Traffic in our parking lot will be facilitated by our custodians. Should you choose to park on the road, please be mindful not to block the roadway or residential driveways.

## Accessibility

Temple Emanuel makes every effort to accommodate members' needs. We have designated the side driveway (near the kitchen entrance) as handicapped parking only. There is also reserved seating in the sanctuary for those who need it, as well as large-print prayerbooks and hearing amplification devices that tap directly into our sound system. If you have special concerns or needs that you would like to discuss before the High Holy Days, please reach out to our executive director, Michelle Gamliel, at [mgamliel@templemanuel.net](mailto:mgamliel@templemanuel.net) so we can better support you.

## Ushers

All ushering is performed by Temple Emanuel members. We have a wonderful corps of ushers coordinated by the Brotherhood. We hope you will join our group of ushers in performing this mitzvah. If you are interested in being an usher, please visit our website at [www.templemanuel.net/HHD](http://www.templemanuel.net/HHD) to sign up.





# GUEST TICKET ORDER FORM

We welcome your out-of-town guests to observe the High Holy Days with us both in person and online. To request High Holy Day tickets for your guest(s), please complete the form below or on our website at [www.templemanuel.net/HHD](http://www.templemanuel.net/HHD) by September 15.

Tickets for out-of-town guests are \$180 per person for in-person services and \$180 per household for online access.

Name of member requesting guest tickets: \_\_\_\_\_

Email: \_\_\_\_\_

### **Benefactors Society Guest Tickets**

Benefactors Society members in the Champion, Sustainer and Patron giving levels (gifts of \$540 and above) may receive two complimentary High Holy Day tickets. Guardian members (gifts of \$5,400 and above) may receive four complimentary High Holy Day tickets. To access these tickets, please complete this order form and check the Benefactors Society box below or request your guest tickets at [www.templemanuel.net/HHD](http://www.templemanuel.net/HHD) by September 15.

Check here if you are a Guardian, Champion, Sustainer or Patron of our Benefactors Society.

### **College Students and Active Military Personnel are entitled to complimentary guest tickets**

Check here if you are ordering guest tickets for (a) college student(s) or active military personnel

**Number of In-Person Guests Requiring Paid Tickets** \_\_\_\_\_ x \$180 = \_\_\_\_\_

**Number of In-Person Guests Qualifying for Complimentary Tickets: (No Charge)** \_\_\_\_\_

Guest's Name	Guest's Name
_____	_____
_____	_____
_____	_____

**Number of Guest Households Requiring Paid Online Access** \_\_\_\_\_ x \$180 = \_\_\_\_\_

**Number of Guest Households Qualifying for Complimentary Online Access: (No Charge)** \_\_\_\_\_

Guest's Name	Guest's Email
_____	_____
_____	_____



# YIZKOR BOOK OF REMEMBRANCE

Four times each year, our tradition teaches us to pause and remember loved ones whom death has taken from us, recently or in years long past. The cycles of one year to the next remind us of the passage of time and the passing of life itself.

One way of connecting to deceased loved ones at this sacred time of year dates back to the early thirteenth century, in which some Jewish communities published a Book of Remembrance during the High Holy Day season. Continuing this time-honored tradition, each year on Yom Kippur, Temple Emanuel publishes a Book of Remembrance, which includes Yizkor liturgy as well as the names of your loved ones. We invite you to submit the name(s) of those family members whom you wish to remember and honor this year.

Similarly, giving tzedakah has long served as a time-honored way to ensure that loved ones' legacies live on. Your generosity at this season and throughout the year helps ensure that the vibrant, dynamic Judaism our ancestors bequeathed to us lives on for the next generation.

**Importantly, even if you have submitted names to our Yizkor book in the past, please do so again this year.** To participate in the Book of Remembrance, please fill out the form below or on our website at [www.templemanuel.net/HHD](http://www.templemanuel.net/HHD) by September 15.

Name of Deceased	Remembered By
_____	_____
_____	_____
_____	_____
_____	_____
_____	_____
_____	_____
_____	_____
_____	_____

I enclose \$\_\_\_\_\_ in memory of my loved ones.



The holidays continue after Yom Kippur!

# CELEBRATE THE FESTIVALS OF SUKKOT AND SIMCHATTORAH

**Friday, October 18**

**Tot Shabbat**

5:00–6:00 P.M.

Pizza and service in the sukkah

**Shabbat Sukkot Service**

6:30 P.M.

Special oneg in the sukkah  
following the service

**Sunday, October 20**

**Harvest Fest**

11 A.M. – 1 P.M.

Enjoy pizza in the sukkah, as well  
as outdoor games and crafts

**Thursday, October 24**

**Sukkot Yizkor Service**

10:30–11:30 A.M.

**Friday, October 25**

**Simchat Torah Festival Service with  
Congregational Dinner, Music and  
Dancing**

5:30 P.M. Dinner, 6:30 P.M. Service  
Celebrate with music from our  
house band, Aliyah; the Soul Sisters  
vocal group; and our K–2 religious  
school students

These services and events are open  
to the public.

Learn more and register at [www.templemanuel.net/#calendar](http://www.templemanuel.net/#calendar)

# LEAVE YOUR LEGACY IN OUR HIGH HOLY DAY PRAYER BOOKS



To honor or remember those you care about – or to express lasting appreciation to Temple Emanuel – consider purchasing beautiful bookplates for our High Holy Day prayer books.

For a gift of \$180, a set of two bookplates will be customized with your dedication – one for the Rosh Hashanah and one for the Yom Kippur prayer book. Your generosity will also be recognized in our donor newsletter.

**Order bookplates by September 15 at [www.templemanuel.net/bookplates](http://www.templemanuel.net/bookplates) or complete the form below.**

Orders received by September 15 will be inserted in prayer books used during 2024 High Holy Day services. If you miss this year's deadline and still wish to participate, bookplate purchases may be made throughout the year.



If you would like to purchase multiple sets of bookplates, please photocopy this form and submit one for each set of bookplates.

## DONOR INFORMATION

Email \_\_\_\_\_

First Name \_\_\_\_\_ Last Name \_\_\_\_\_

Bookplate Selection:  In Honor of  In Memory of  In Appreciation of Temple Emanuel

## NAME OF PERSON/PEOPLE BEING HONORED/REMEMBERED

Name(s) \_\_\_\_\_

## DONOR NAME(S) TO BE PRINTED ON BOOKPLATES

Name(s) \_\_\_\_\_

Please return this form, along with a check in the amount of \$180, payable to Temple Emanuel, 7 Haggetts Pond Road, Andover, MA 01810.



# YOM KIPPUR FOOD DRIVE

Each year, Temple Emanuel hosts a Yom Kippur Food Drive in the spirit of *tikkun olam*. This year we're offering a hybrid approach to participation for your convenience. Donate money on our website at [www.templemanuel.net/HHD](http://www.templemanuel.net/HHD) or bring a bag of non-perishable food and paper goods to the temple on Yom Kippur.

Paper bags to fill with non-perishable foods, paper goods and household supplies will be available in the lobby at Rosh Hashanah. Suggested donations include coffee, tea, sugar, sweetener, mustard, ketchup, canned vegetables, tomato sauce, soup, napkins, paper towels, toothpaste, soap and dishwashing liquid. A friendly reminder that diet products, expired and opened packages of food will be disposed of. Please, no glass! Temple volunteers will deliver the bags to the Bread & Roses food pantry in Lawrence. Thanks for your continued support.

# SUKKOT PRODUCE DRIVE

In honor of this harvest festival, we will be decorating the sukkah with your contributions of fruits, vegetables, gourds and pumpkins. Your produce donations will add to the beauty of the holiday and then go to help nourish our food-insecure neighbors. Please bring apples, squash, gourds, cabbage, carrots, onions and brussel sprouts. Donations may be dropped off in the temple lobby or at the sukkah during Tot Shabbat and evening services on October 18 and at Harvest Fest on October 20.



# CHALLAH ORDER FORM

Enjoy round kosher challot for the High Holy Days and the convenience of pick-up at temple. Please fill out the form below or on our website at [www.templemanuel.net/HHD](http://www.templemanuel.net/HHD) by September 15.

**Rosh Hashanah challah pick-up times:**

Tuesday, October 1, 9:30 A.M. - 4:30 P.M.  
Wednesday, October 2, 9:00 - 11:30 A.M.

**Yom Kippur challah pick-up times:**

Thursday, October 10, 9:00 A.M. - 4:30 P.M.  
Friday, October 11, 9:00 - 11:30 A.M.

Name of Temple Emanuel Member \_\_\_\_\_

Email \_\_\_\_\_ Phone \_\_\_\_\_

**Rosh Hashanah Challot**

**Yom Kippur Challot**

Number of Plain (\$10.00 each): \_\_\_\_\_

Number of Plain (\$10.00 each): \_\_\_\_\_

Number of Raisin (\$11.00 each): \_\_\_\_\_

Number of Raisin (\$11.00 each): \_\_\_\_\_

Total Enclosed: \_\_\_\_\_

# COLLEGE STUDENT CARE PACKAGES

Temple Emanuel Sisterhood helps keep your college students connected to our community. Care packages are sent for the High Holy Days and Pesach to college students who are children of Sisterhood members or children of those who make a \$54 donation per student to Sisterhood's college student program through the form below or on the High Holy Day website.

Please complete the form below or at [www.templemanuel.net/HHD](http://www.templemanuel.net/HHD) by September 15 to have a High Holy Day package sent to your college student(s).

Name of Sisterhood Member/Donor \_\_\_\_\_

Name of College Student \_\_\_\_\_ College Year \_\_\_\_\_

Name of College \_\_\_\_\_

Student's Mailing Address: \_\_\_\_\_

\_\_\_\_\_

I am not a Sisterhood member and am including a \$54 donation per college student



**TEMPLE EMANUEL**  
ANDOVER

7 Haggetts Pond Road, Andover, MA 01810

978.470.1356

[info@templeemanuel.net](mailto:info@templeemanuel.net)

[www.templeemanuel.net](http://www.templeemanuel.net)

Non Profit Org.  
U.S. Postage

**PAID**

Permit No. 278  
Andover, Mass.

